



### Exterior Features

- Siding Exterior with relaxing covered front porch
- Spacious 5-car garage with 20' ceiling and lift ready
- Private master bedroom balcony
- Extensive professional landscaping



*9051 Swans Creek Way  
Lorton, VA 22079*



Dane Work, ABR  
RE/MAX Preferred Properties  
Direct : (703) 869-4567  
Office : (703) 255-9700  
E-Mail: [danework@erols.com](mailto:danework@erols.com)  
Website: [www.danework.com](http://www.danework.com)





### Family Room

- Stunning Brazilian Cherry hardwood flooring
- Gas fireplace is framed with Travertine tile and two sunlit windows
- Designer ceiling fan

### Main Level Office

- Brazilian Cherry hardwood floors
- Elaborate crown molding and chair railing with picture frame wainscoting



### Master Bedroom

- Spacious sunlit luxury master bedroom
- Cozy separate sitting room with floor-to-ceiling Travertine tile gas fireplace
- Oversized walk-in closets
- Tray ceiling with remote control ceiling fan

### Lavish Master Bathroom

- His & hers sinks and countertop with designer mosaic tile backsplash
- Large Jacuzzi tub
- Beautiful Travertine floors
- Over-sized, glass shower enclosure with bench seat





# 9051 Swans Creek Way



## Foyer

- Soaring two-story central foyer welcomes you to an open and flowing floor plan
- Beautiful cherry hardwood flooring and elegant designer chandelier



## Living Room

- Sun-filled formal living room with ornate crown molding
- Upgraded carpet and padding
- Excellent space for formal entertaining
- Sun-filled windows

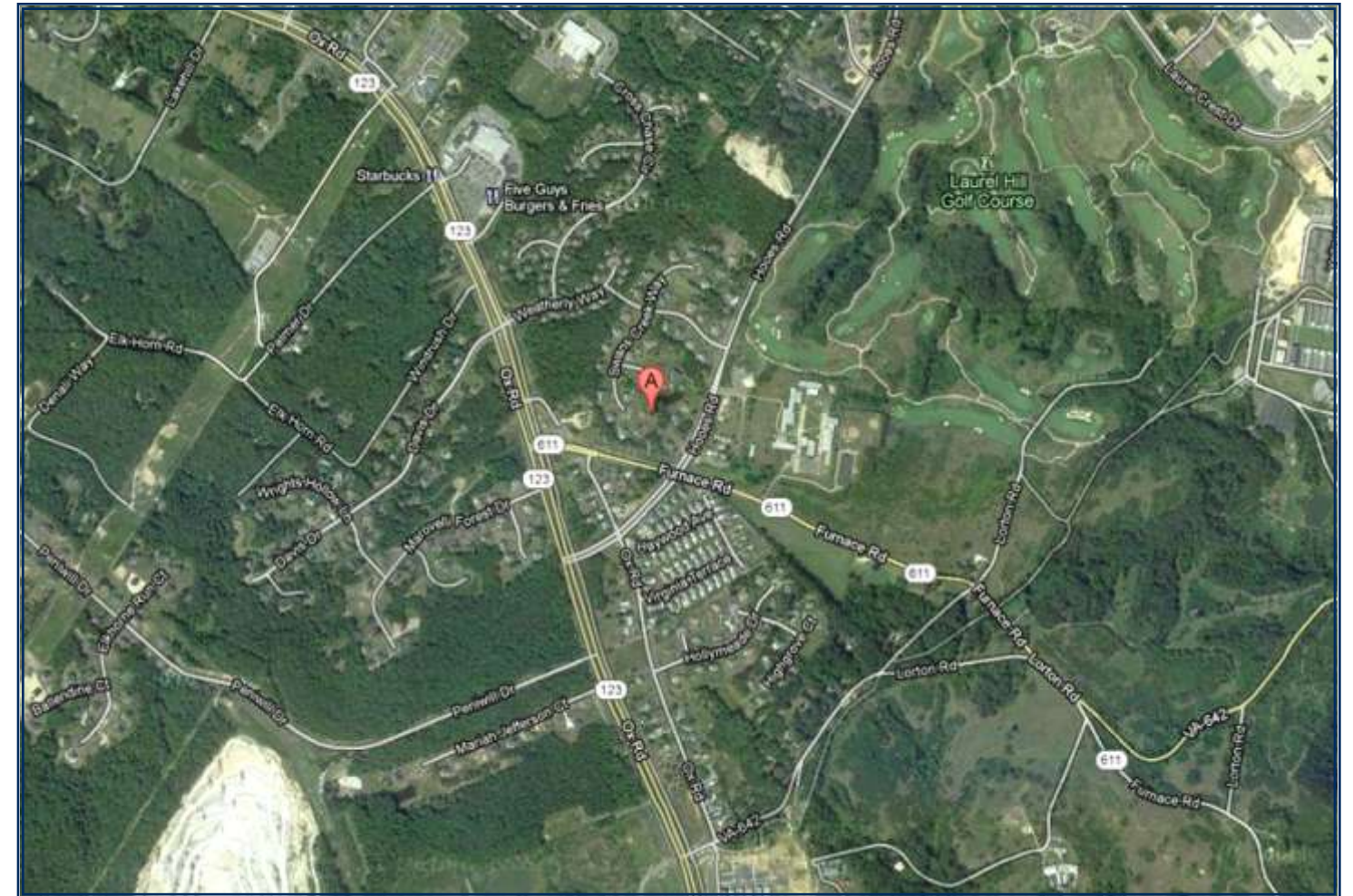
## Dining Room

- Gracious dining room with plenty of seating capacity
- Cherry hardwood flooring
- Ornate crown molding and chair railing
- Elegant designer chandelier
- Four light capturing windows



## Elegant Half Bath

- Beautiful custom finishes



- Excellent commuter location
- Minutes to the VRE, the Metro, I-95 with access to I-395/495
- Close to the Fairfax County Parkway
- Lorton Station just a few minutes away with many upscale restaurants, shopping and boutiques







### Chef's Kitchen

- Spacious gourmet kitchen with custom cherry cabinetry and 12x12 tile flooring
- Professional grade stainless steel appliances
- Center island with gas Cooktop
- Breakfast counter with bar seating and travertine tile accents

### Breakfast Room

- Great space for casual dining
- 12x12 tile flooring
- French door opening to the deck
- Abundant natural sunlight fills the room



### Upper Bedroom Suites

- Three roomy guest bedroom suites
- Each with private bath
- Spacious walk-in closets

### Lower Level

- Expansive entertainment room with custom wet bar and fireplace
- 5th bedroom suite with private bath

### Morning Room

- Gleaming Travertine flooring
- Elaborate colonial moldings and recessed lighting
- Wrapped in light-filled windows
- Breakfast counter from kitchen

